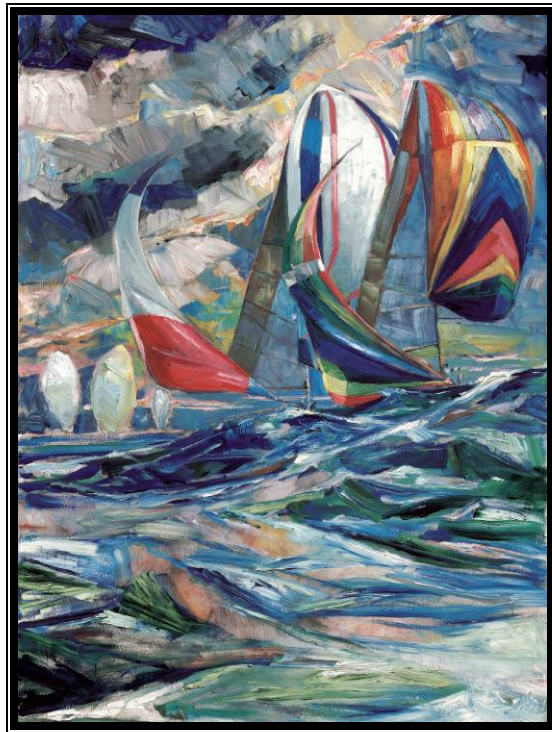




# *Albemarle Hospice Regatta*

**Sponsor Proposal  
2009**



Copyright © Willard Bond

*We cannot direct the wind,  
but we can adjust the sails*

# Albemarle Hospice Regatta

## SPONSORSHIP AND DONATIONS



### North Wind - \$500

Businesses or individuals who contribute \$500 will be the Sponsor of a trophy series for the regatta. Their name will be displayed on the 1<sup>st</sup>, 2<sup>nd</sup> and 3<sup>rd</sup> place trophies for a given race. They also receive their name displayed proudly on a banner at the dinner, recognition in the regatta program and recognition on the regatta website. The Sponsor will receive two tickets to the awards dinner/party and two regatta t-shirts. North Wind sponsors will also be recognized in a post regatta newspaper ad.



### South Wind - \$250

Businesses or individuals who contribute \$250 will receive their name displayed proudly on a banner at the dinner, recognition in the regatta program and recognition on the regatta website. They will also receive two tickets to the awards dinner/party and two regatta t-shirts. South Wind sponsors will also be recognized in a post regatta newspaper ad.



### East Wind - \$100

Businesses or individuals who contribute \$100 will receive their name displayed proudly on a banner at the dinner, recognition in the regatta program and recognition on the regatta website. They will also receive one ticket to the awards dinner/party.



### West Wind - \$50

Businesses or individuals who contribute \$50 will receive their name displayed proudly on a banner at the dinner, recognition in the regatta program and recognition on the regatta website.

---

Sponsorship recognition on the web site will be maintained throughout the year. Company logos may be included on the website.

Please use the **DONATION FORM** below to make a **TAX DEDUCTIBLE CONTRIBUTION** to the **ALBEMARLE HOSPICE REGATTA**. All proceeds benefit the Albemarle Hospice Regatta and the profits of the regatta go directly to Albemarle Hospice.

*In addition to dollars, both the Alliance and most local regattas can use in-kind goods (with or without company imprint) and services. Providing goods and services that can be used for trophies, gifts, raffle or auction reduces costs, increases revenue, or promotes Hospice and the fact that you support us.*

## THANK YOU FOR YOUR SUPPORT

---

Name: \_\_\_\_\_ Contact: \_\_\_\_\_

Address: \_\_\_\_\_

City: \_\_\_\_\_ State: \_\_\_\_\_ Zip: \_\_\_\_\_

Phone:(\_\_\_\_\_) \_\_\_\_\_ DONATION AMOUNT: \$ \_\_\_\_\_

Email: \_\_\_\_\_

Mail to: ALBEMARLE HOSPICE REGATTA, P. O. Box 278 Camden, North Carolina 27921 (252) 337-8989

# **WHY SUPPORT HOSPICE THROUGH THE ALBEMARLE HOSPICE REGATTA?**

*Your commitment not only helps us build awareness of Hospice care, it helps us to raise money for uncovered Hospice services in our community.*

## **HOSPICE TOUCHES EVERYONE**

Hospice helps terminally ill patients and everyone associated with them -- spouses, parents, , children, neighbors, employers and friends -- live better in the remaining time.

## **HOSPICE IS TEAMWORK IN THE COMMUNITY AND THE HOME**

Teams of medical professionals and trained volunteers work with patients and their families to provide Hospice care in their homes or home-like settings. The need for this care is increasing as an aging population increases.

## **HOSPICE GENERATES LOYALTY**

Everyone touched by Hospice remembers the people and organizations that helped them through the difficult time. They become loyal proponents of Hospice as well as of those who support it.

## **HOSPICE IS NON-PROFIT AND AVAILABLE TO EVERYONE**

Hospice services are provided without regard to ability to pay, so charitable contributions support services not covered by insurance or other means

## **HOSPICE CARE IS UNIQUE**

Hospice is the only form of care that provides such a full range of services to both patients and their families, tailored to their needs.

In addition to palliative care such as symptom control and pain management, Hospice offers psychological and spiritual support -- and assistance with day-to-day living -- for both patients and others involved with them. Hospice is also unique in offering professional bereavement services such as group or individual counseling and children's programs.

## **HOSPICE INSPIRES OTHERS TO HELP**

Volunteer help and public contributions are essential to Hospice's success because of the many services not funded by conventional means. While some volunteers are friends or family of Hospice patients, other volunteers and supporters are inspired when they learn about Hospice through the local regattas or the national Championship.

# WHY SAILING REGATTAS?

## EYE-CATCHING AND LIVELY

Hospice regattas are colorful, refreshing attention-getters for the Hospice concept and those who support it.

## DIFFERENT

More public and more casual than many fundraisers, hospice regattas attract more diverse numbers of people. While individuals and companies already supportive of Hospice participate, the sailors and the general public also get involved in contributing time and money.

## LARGE, SPECIAL AUDIENCES

Regattas -- with their accompanying parties, publications, and advertising -- are enjoyable events that offer ample opportunities for sponsors to publicize their products and services to people who care about Hospice, sailing, or both

## SAILING IS TEAMWORK, TOO

Sailboat racing requires teamwork. This is naturally appealing and makes a natural fit with Hospice care which must use teamwork to help patients and their families. The teamwork of sailboat racing creates enthusiasm for the events, for Hospice, and for the sponsors who are associated with them.

